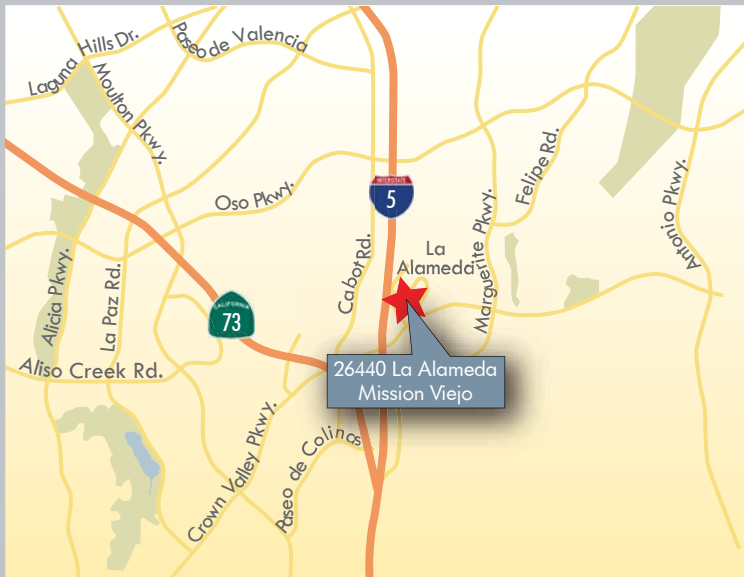


For more information, visit www.OCofficespace.com



26440 LA ALAMEDA
FEATURES:

- Three-Story, Elevator-Served Office Building
- Proactive & Responsive Ownership
- High Profile Mission Viejo Location
- Immediate Access to Interstate 5
- Abundant Free Surface Parking
- Close Proximity to Retail Amenities



AVAILABILITY:

SUITE	RSF	LEASE RATE	COMMENTS
310	1,172	\$1.95 FSG	3 offices, work area, kitchen & reception.
350	1,840	\$1.95 FSG	4 offices, conference room, reception & kitchen.

Please Contact Exclusive Agents:

ADAM WICKER

Senior Vice President
License ID# 01225873
949.790.3135
awicker@lee-associates.com

DAVE SMITH

Senior Vice President
License ID# 01195186
949.790.3134
dsmith@lee-associates.com

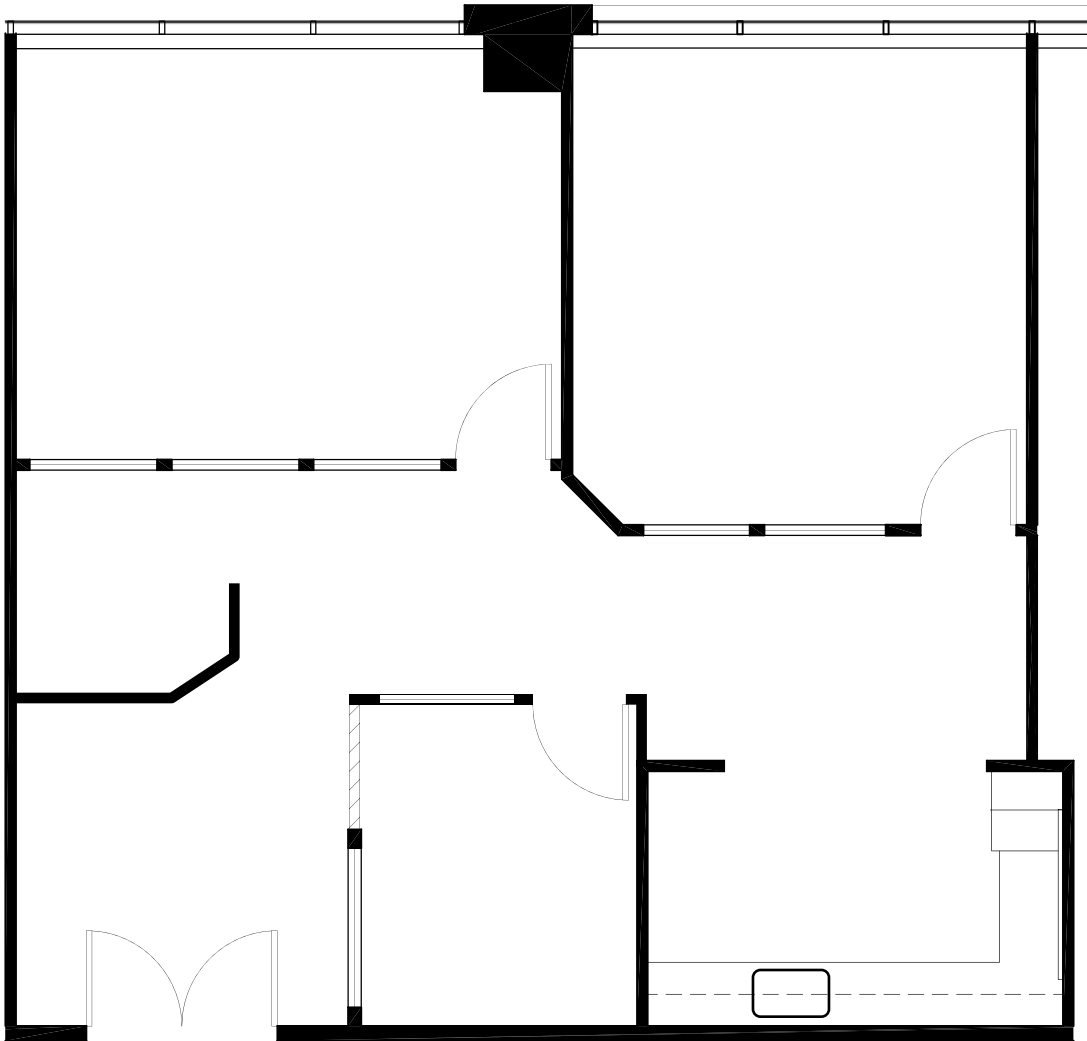
MATT FRYER

Vice President
License ID# 01333079
949.790.3122
mfryer@lee-associates.com



Lee & Associates - Irvine, Inc. | 111 Pacifica, Suite 310, Irvine, California 92618 | www.lee-associates.com

No warranty or representation is made to the accuracy of the foregoing information. Terms of sale or lease and availability are subject to change or withdrawal without notice.



26440 LA ALAMEDA • MISSION VIEJO, CA

Please Contact Exclusive Agents:

ADAM WICKER

Senior Vice President
License ID# 01225873
949.790.3135
awicker@lee-associates.com

DAVE SMITH

Senior Vice President
License ID# 01195186
949.790.3134
dsmith@lee-associates.com

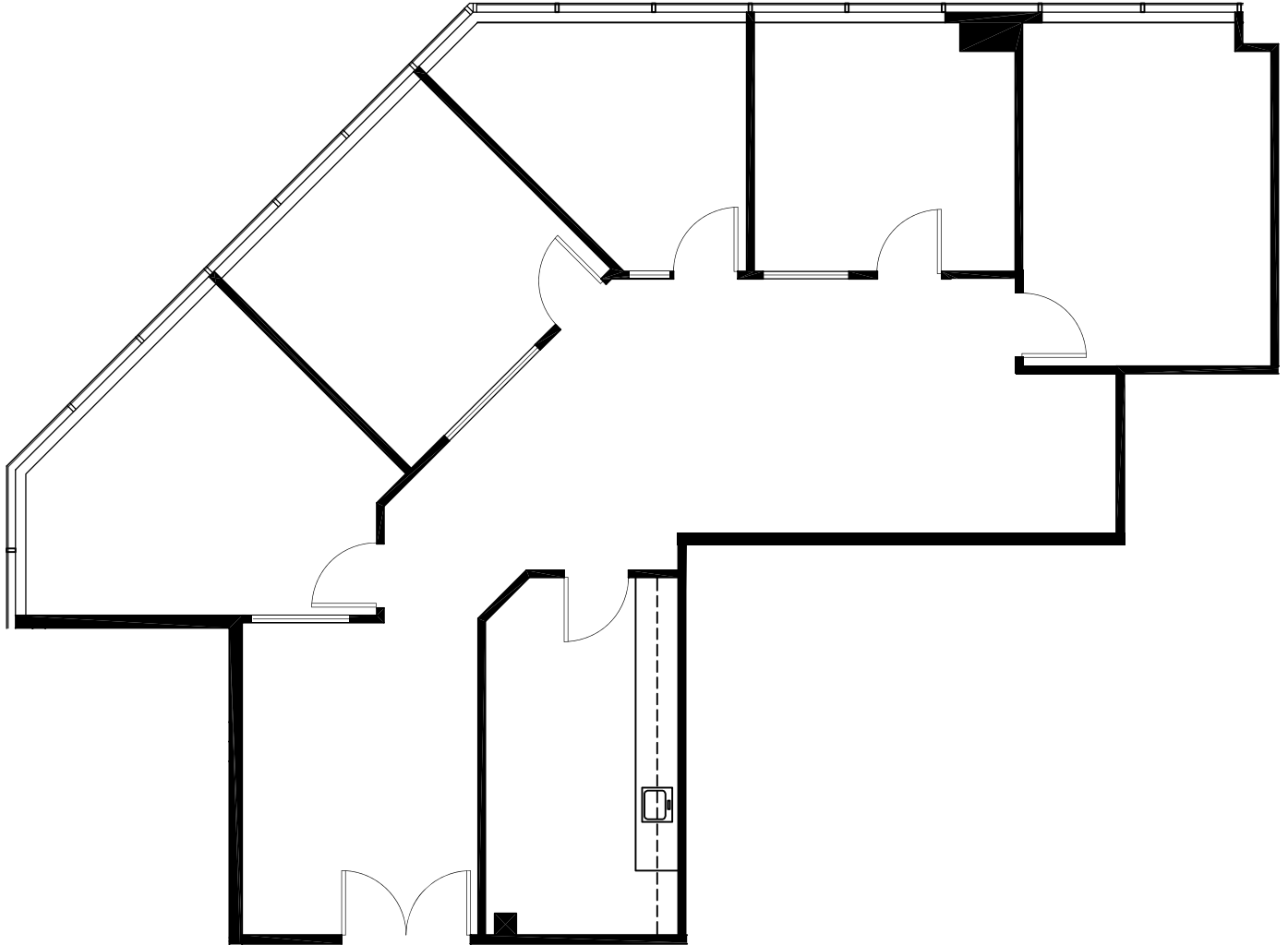
MATT FRYER

Vice President
License ID# 01333079
949.790.3122
mfryer@lee-associates.com



Lee & Associates - Irvine, Inc. | 111 Pacifica, Suite 310, Irvine, California 92618 | www.lee-associates.com

No warranty or representation is made to the accuracy of the foregoing information. Terms of sale or lease and availability are subject to change or withdrawal without notice.



26440 LA ALAMEDA • MISSION VIEJO, CA

Please Contact Exclusive Agents:

ADAM WICKER

Senior Vice President
License ID# 01225873
949.790.3135
awicker@lee-associates.com

DAVE SMITH

Senior Vice President
License ID# 01195186
949.790.3134
dsmith@lee-associates.com

MATT FRYER

Vice President
License ID# 01333079
949.790.3122
mfryer@lee-associates.com



Lee & Associates - Irvine, Inc. | 111 Pacifica, Suite 310, Irvine, California 92618 | www.lee-associates.com

No warranty or representation is made to the accuracy of the foregoing information. Terms of sale or lease and availability are subject to change or withdrawal without notice.