

For more information, visit [www.OCofficespace.com](http://www.OCofficespace.com)



26431 CROWN VALLEY PARKWAY, MISSION VIEJO, CALIFORNIA

EXCLUSIVELY OFFERED BY:

**ADAM WICKER**  
Senior Vice President  
License ID# 01225873  
(949) 790-3135  
[awicker@lee-associates.com](mailto:awicker@lee-associates.com)

**DAVE SMITH**  
Senior Vice President  
License ID# 01195186  
(949) 790-3134  
[dsmith@lee-associates.com](mailto:dsmith@lee-associates.com)

**MATT FRYER**  
Vice President  
License ID# 01333079  
(949) 790-3122  
[mfryer@lee-associates.com](mailto:mfryer@lee-associates.com)

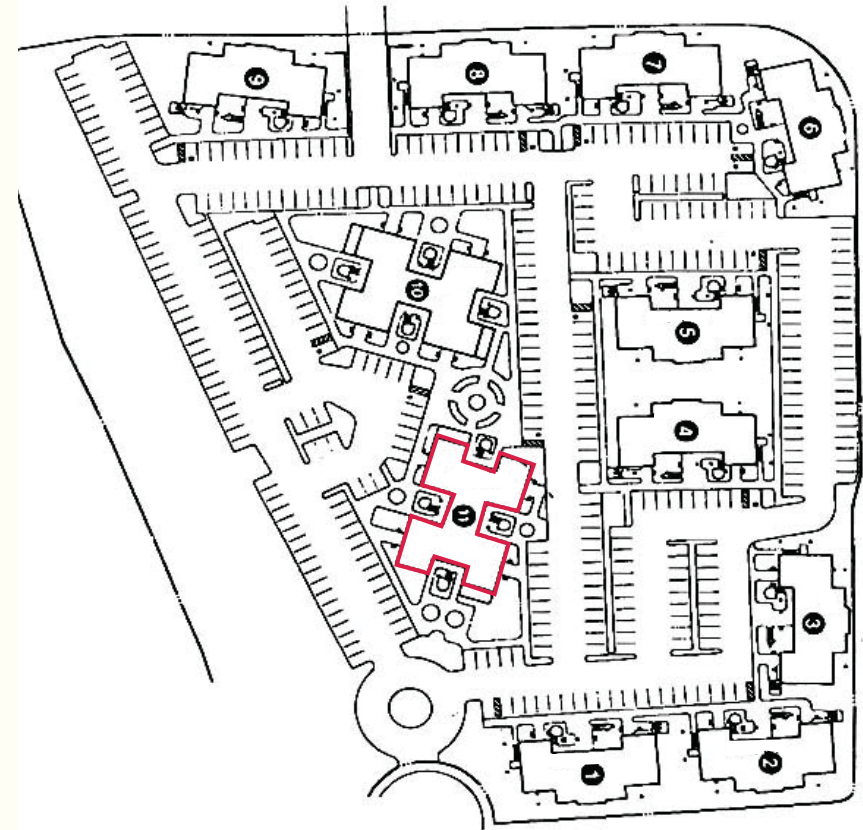
PROPERTY FEATURES:

- A 12,096 square foot, two-story, freestanding office building located in the heart of Mission Viejo.
- Unique tenant opportunities - conducive to accommodate a user from 1,000 to 6,029 square feet.
- Multi-tenant office building. Multiple entries (8) allow for maximum flexibility to accommodate small or larger tenants.
- High profile, professional office campus consisting of eleven (11) office/medical buildings totaling 115,000 square feet.
- Strategic location off of Crown Valley Parkway with immediate access to Interstate 5 Freeway and adjacent to retail amenities.

AVAILABILITY

SUITE	RSF	LEASE RATE*	COMMENTS
200	2,106	\$0.99 FSG	2 offices, reception, balcony & open area.
210	1,322	\$0.99 FSG	3 offices, conference room, reception, balcony, open area & kitchen.
260	1,089	\$0.99 FSG	2 offices, open area, reception & balcony.

SITE PLAN:



EXCLUSIVELY OFFERED BY:

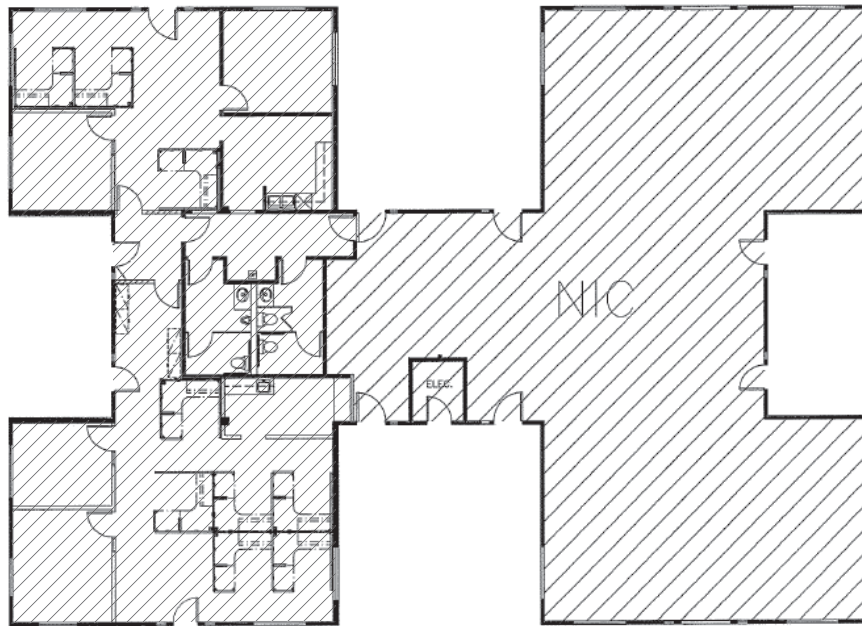
**ADAM WICKER**  
Senior Vice President  
License ID# 01225873  
(949) 790-3135  
awicker@lee-associates.com

**DAVE SMITH**  
Senior Vice President  
License ID# 01195186  
(949) 790-3134  
dsmith@lee-associates.com

**MATT FRYER**  
Vice President  
License ID# 01333079  
(949) 790-3122  
mfryer@lee-associates.com

26431 Crown Valley Parkway

Suite 110  
LEASED



Suite 150  
LEASED

Suite 250  
LEASED



Suite 260  
1,089 RSF

Suite 210  
1,322 RSF

Suite 200  
2,106 RSF

EXCLUSIVELY OFFERED BY:



**ADAM WICKER**  
Senior Vice President  
(949) 790-3135  
awicker@lee-associates.com

**DAVE SMITH**  
Senior Vice President  
(949) 790-3134  
dsmith@lee-associates.com

**MATT FRYER**  
Vice President  
(949) 790-3122  
mfryer@lee-associates.com

Lee & Associates - Irvine, Inc.  
111 Pacifica, Suite 310  
Irvine, California 92618

No warranty or representation is made to the foregoing information. Terms of sale or lease and availability are subject to change or withdrawal without notice.

