

For more information, visit www.OCofficespace.com



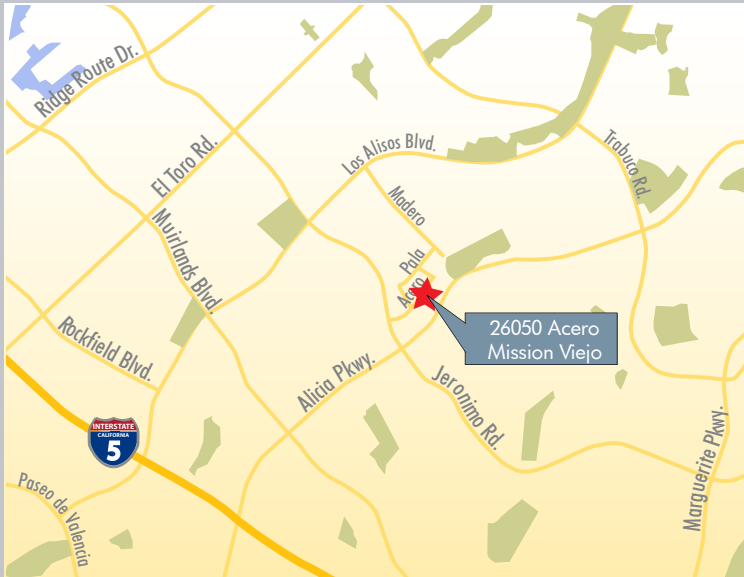
\$0.99 FSG*

26050 ACERO
FEATURES:

*\$0.99 FSG for first 6 months.

- Freestanding Two-Story Office Building
- Located within a Master Planned Business Park
- Generous 4:1,000 Parking Ratio (Surface)
- Professional Office Campus Setting

- Close to the San Diego (5) Freeway
- Highly Efficient Floor Plan
- Walking Distance to Retail Amenities
- Minutes to Mission Viejo Regional Mall



AVAILABILITY:

SUITE	RSF	LEASE RATE*	COMMENTS
150	965	\$0.99 FSG	Two (2) private offices, storage room, open area and reception area.

Please Contact Exclusive Agents:



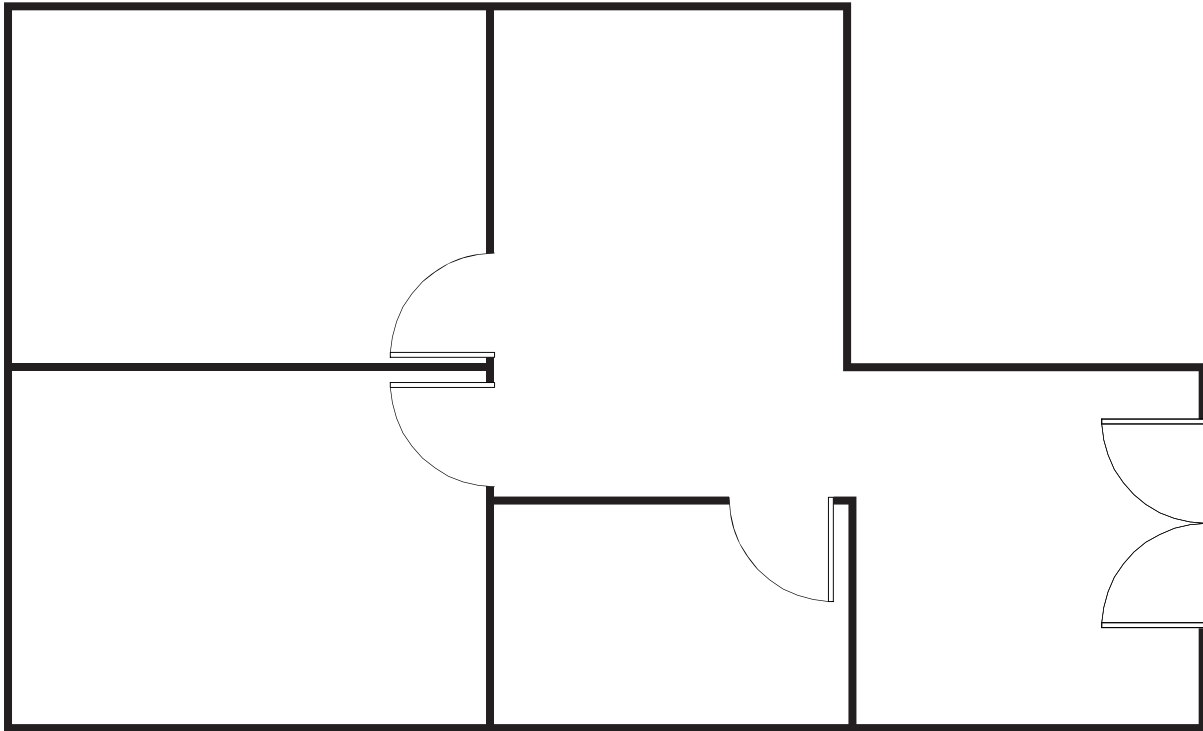
ADAM WICKER
Senior Vice President
License ID# 01225873
949.790.3135
awicker@lee-associates.com

DAVE SMITH
Senior Vice President
License ID# 01195186
949.790.3134
dsmith@lee-associates.com

ROB RADER
Vice President
License ID# 01373045
949.790.3145
rrader@lee-associates.com

Lee & Associates - Irvine, Inc. 111 Pacifica, Suite 310 | Irvine, California 92618

No warranty or representation is made to the accuracy of the foregoing information. Terms of sale or lease and availability are subject to change or withdrawal without notice.



26050 ACERO • MISSION VIEJO, CA

Please Contact Exclusive Agents:



ADAM WICKER
Senior Vice President
949.790.3135
awicker@lee-associates.com

DAVE SMITH
Senior Vice President
949.790.3134
dsmith@lee-associates.com

ROB RADER
Vice President
949.790.3145
rrader@lee-associates.com

Lee & Associates - Irvine, Inc. 111 Pacifica, Suite 310 | Irvine, California 92618

No warranty or representation is made to the accuracy of the foregoing information. Terms of sale or lease and availability are subject to change or withdrawal without notice.