

For more information, visit www.OCofficespace.com



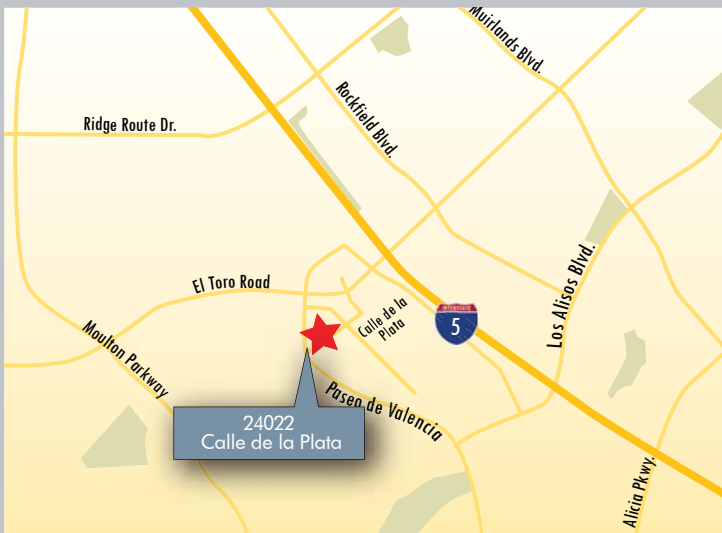
24022 CALLE DE LA PLATA
FEATURES:

- Five-Story Elevator-Served Office/Medical Building
- High-Profile Location/Building Signage Available
- Immediate Access to Interstate 5 Freeway
- Walking Distance to Laguna Hills Mall/Restaurants/Amenities
- Proactive and Responsive Ownership
- Medical Uses Allowed (Asking Rate of \$3.00 FSG)
- Saddleback Mountain Views

*\$0.99 FSG for initial twelve months of a minimum 3-year lease and AS-IS TIs. Expires 09/30/2010.

AVAILABILITY:

SUITE	RSF	LEASE RATE	COMMENTS
100	6,500	\$0.99 FSG	Building Signage Available. Double-door entry directly off lobby. Reception, large conference room, 19 offices, kitchen, server room & storage room.
405	2,400	\$0.99 FSG	Double-door entry, reception, conference room, 2 offices, large open area, kitchen and storage area.
407	855	\$0.99 FSG	SPEC SUITE. Reception and 2 large offices.
500*	4,778	\$0.99 FSG	Reception, large conference room, 11 offices, kitchen, storage, server room, large open area and LARGE PATIO AREA .
510	1,936	\$0.99 FSG	SPEC SUITE. Reception, conference room, 4 window offices, kitchen/storage, server room and open area.
525*	1,130	\$0.99 FSG	Reception, 2 offices, storage room and open area.
500/525	5,908	\$0.99 FSG	*Divisible. Up to 12offices, 2 conference rooms, reception, kitchen and large open area.



Please Contact Exclusive Agents:

ADAM WICKER

Senior Vice President
License ID# 01225873
949.790.3135
awicker@lee-associates.com

DAVE SMITH

Senior Vice President
License ID# 01195186
949.790.3134
dsmith@lee-associates.com

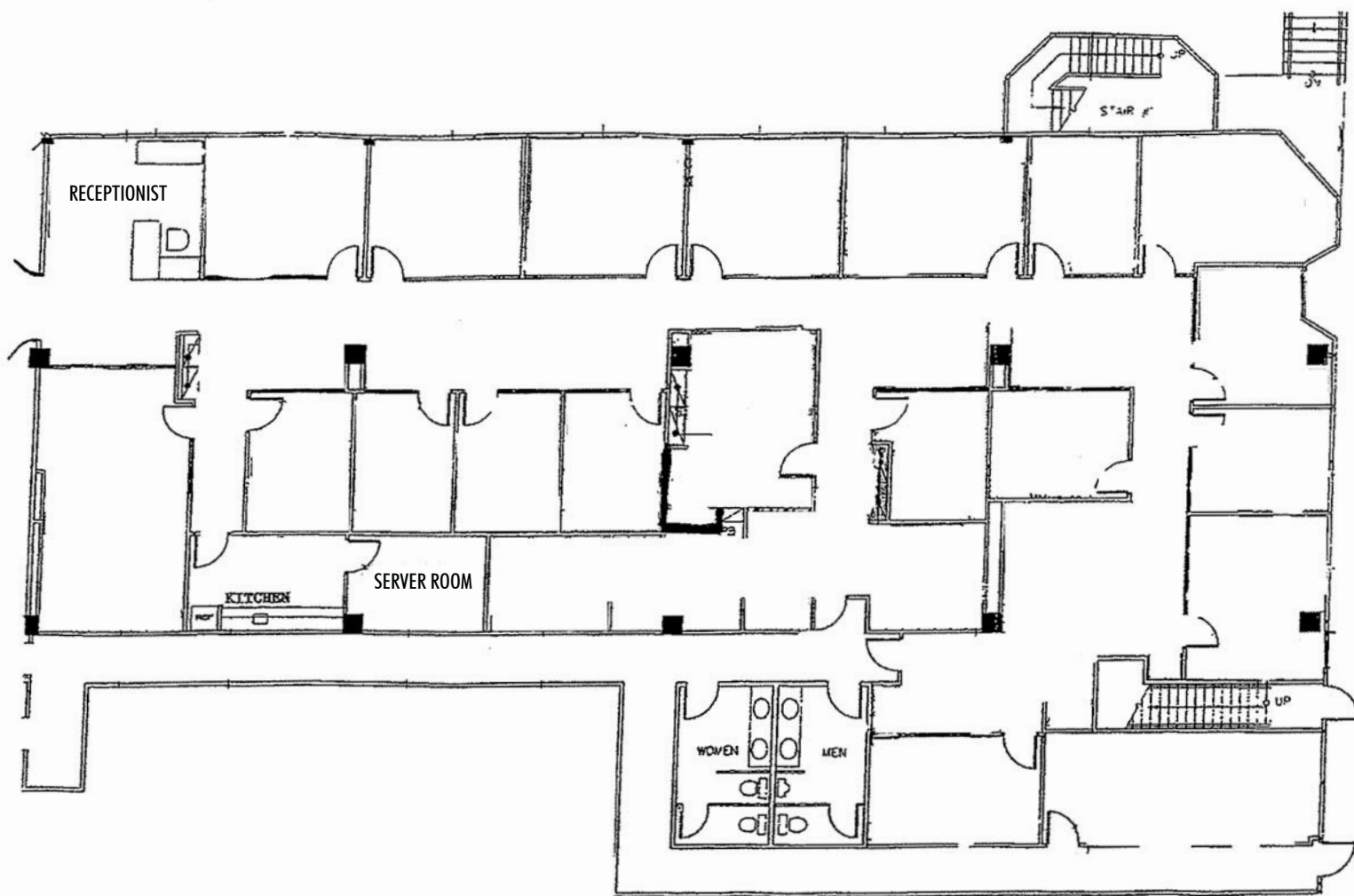
MATT FRYER

Vice President
License ID# 01333079
949.790.3122
mfrayer@lee-associates.com



Lee & Associates - Irvine, Inc. | 111 Pacifica, Suite 310, Irvine, California 92618 | www.lee-associates.com

No warranty or representation is made to the accuracy of the foregoing information. Terms of sale or lease and availability are subject to change or withdrawal without notice.



24022 CALLE DE LA PLATA • LAGUNA HILLS, CA

Please Contact Exclusive Agents:

ADAM WICKER

Senior Vice President
License ID# 01225873
949.790.3135
awicker@lee-associates.com

DAVE SMITH

Senior Vice President
License ID# 01195186
949.790.3134
dsmith@lee-associates.com

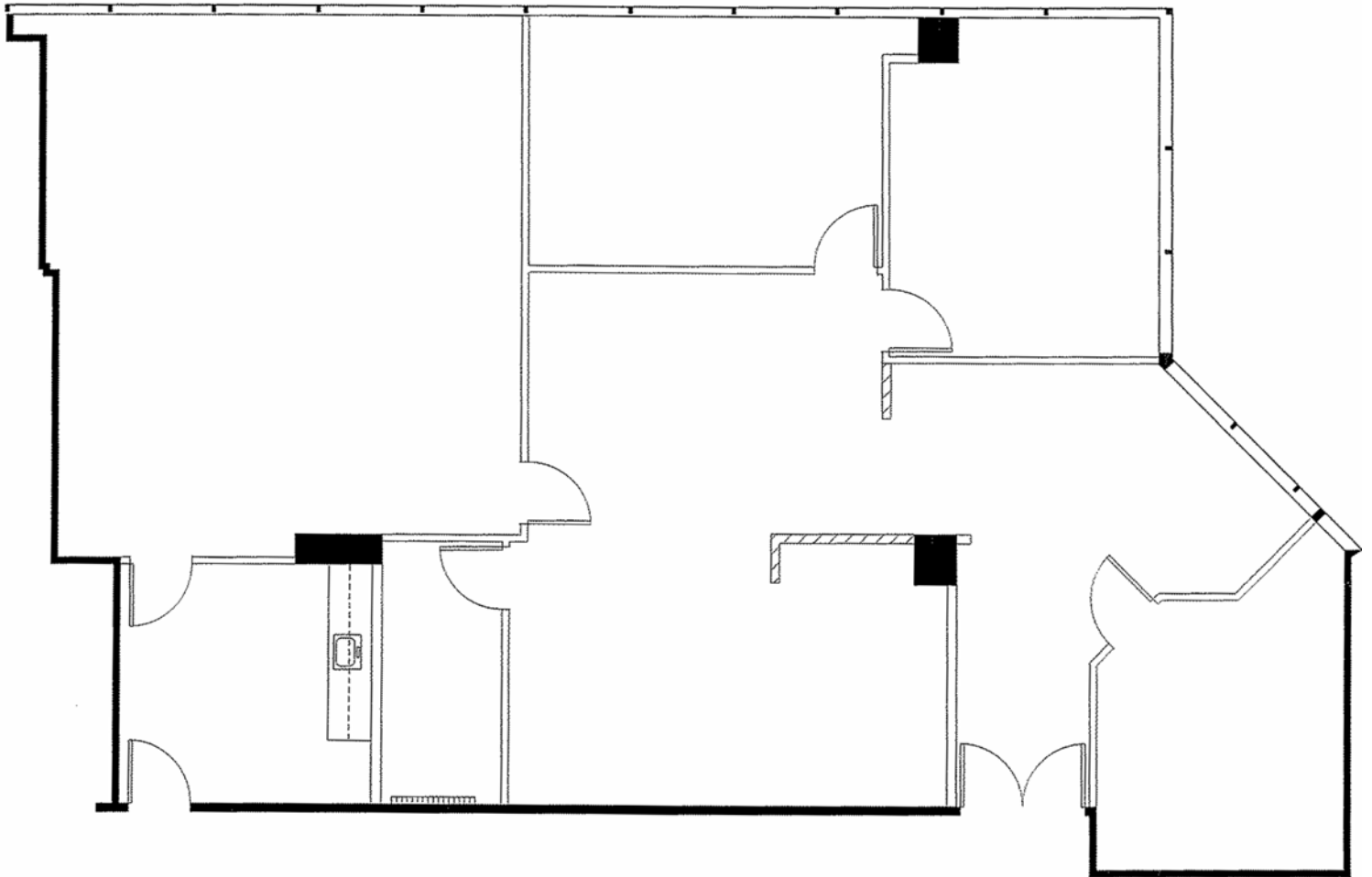
MATT FRYER

Vice President
License ID# 01333079
949.790.3122
mfryer@lee-associates.com



Lee & Associates - Irvine, Inc. | 111 Pacifica, Suite 310, Irvine, California 92618 | www.lee-associates.com

No warranty or representation is made to the accuracy of the foregoing information. Terms of sale or lease and availability are subject to change or withdrawal without notice.



24022 CALLE DE LA PLATA • LAGUNA HILLS, CA

Please Contact Exclusive Agents:

ADAM WICKER

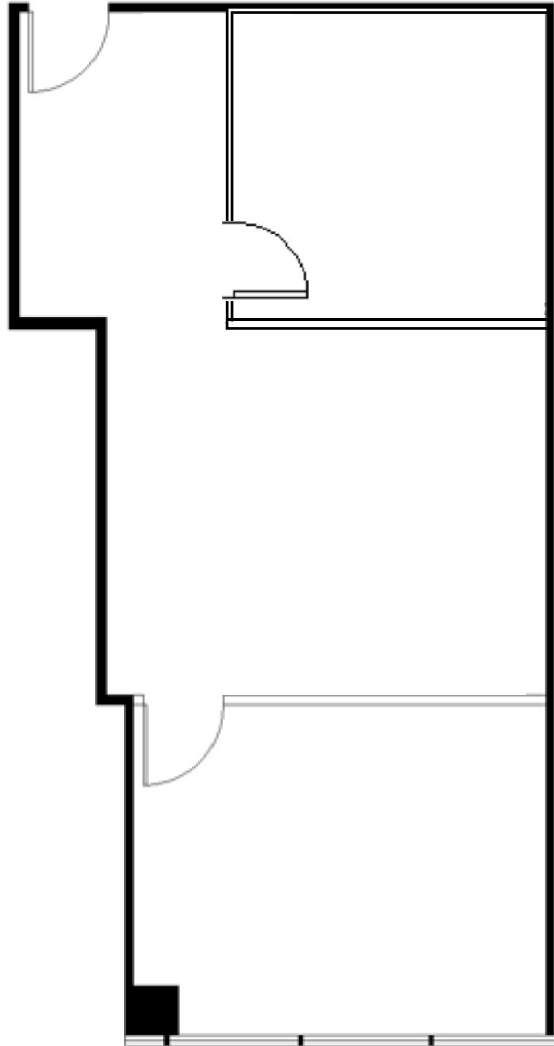
Senior Vice President
License ID# 01225873
949.790.3135
awicker@lee-associates.com

DAVE SMITH

Senior Vice President
License ID# 01195186
949.790.3134
dsmith@lee-associates.com

MATT FRYER

Vice President
License ID# 01333079
949.790.3122
mfryer@lee-associates.com



24022 CALLE DE LA PLATA • LAGUNA HILLS, CA

Please Contact Exclusive Agents:

ADAM WICKER

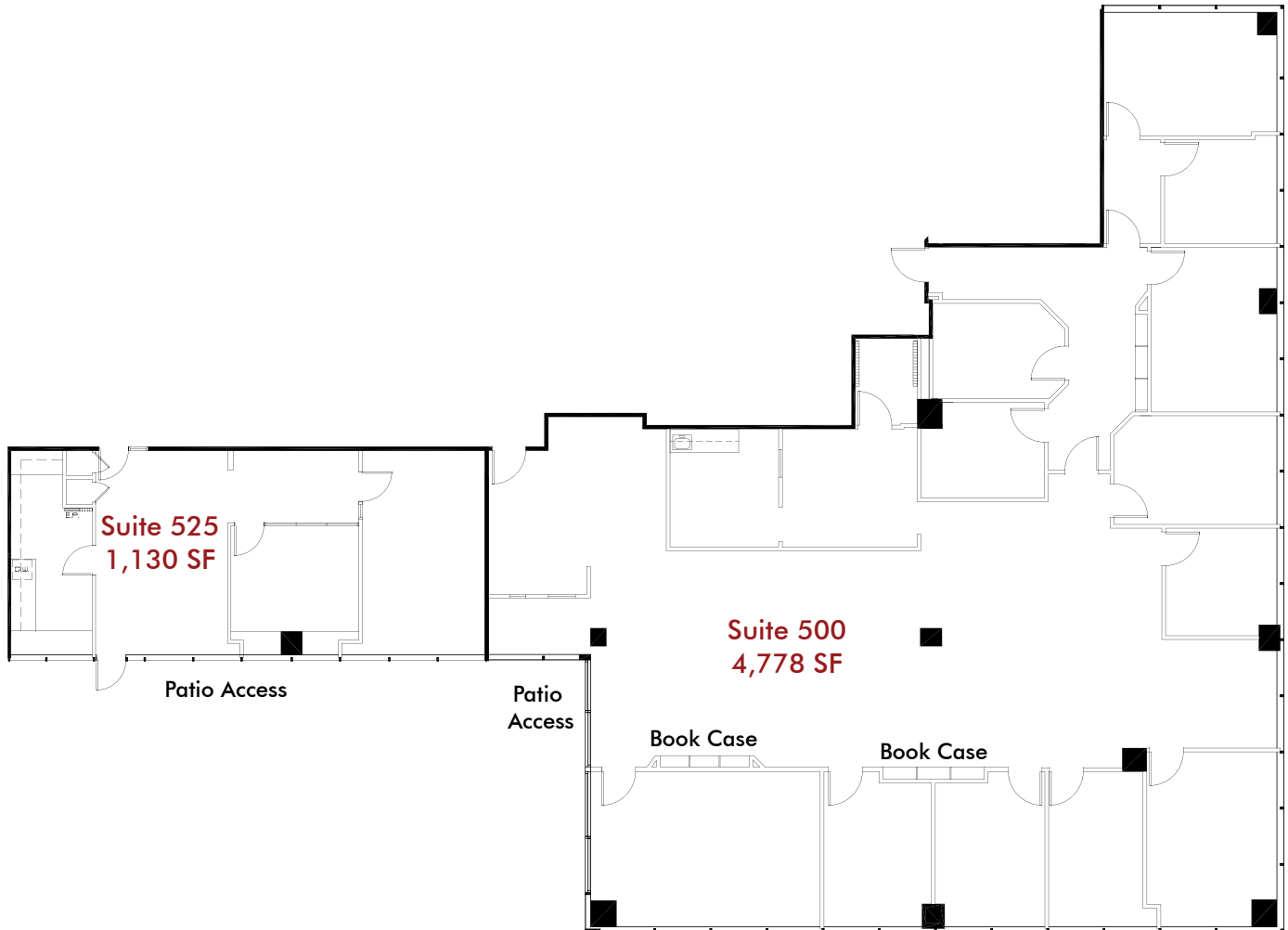
Senior Vice President
License ID# 01225873
949.790.3135
awicker@lee-associates.com

DAVE SMITH

Senior Vice President
License ID# 01195186
949.790.3134
dsmith@lee-associates.com

MATT FRYER

Vice President
License ID# 01333079
949.790.3122
mfryer@lee-associates.com



24022 CALLE DE LA PLATA • LAGUNA HILLS, CA

Please Contact Exclusive Agents:

ADAM WICKER

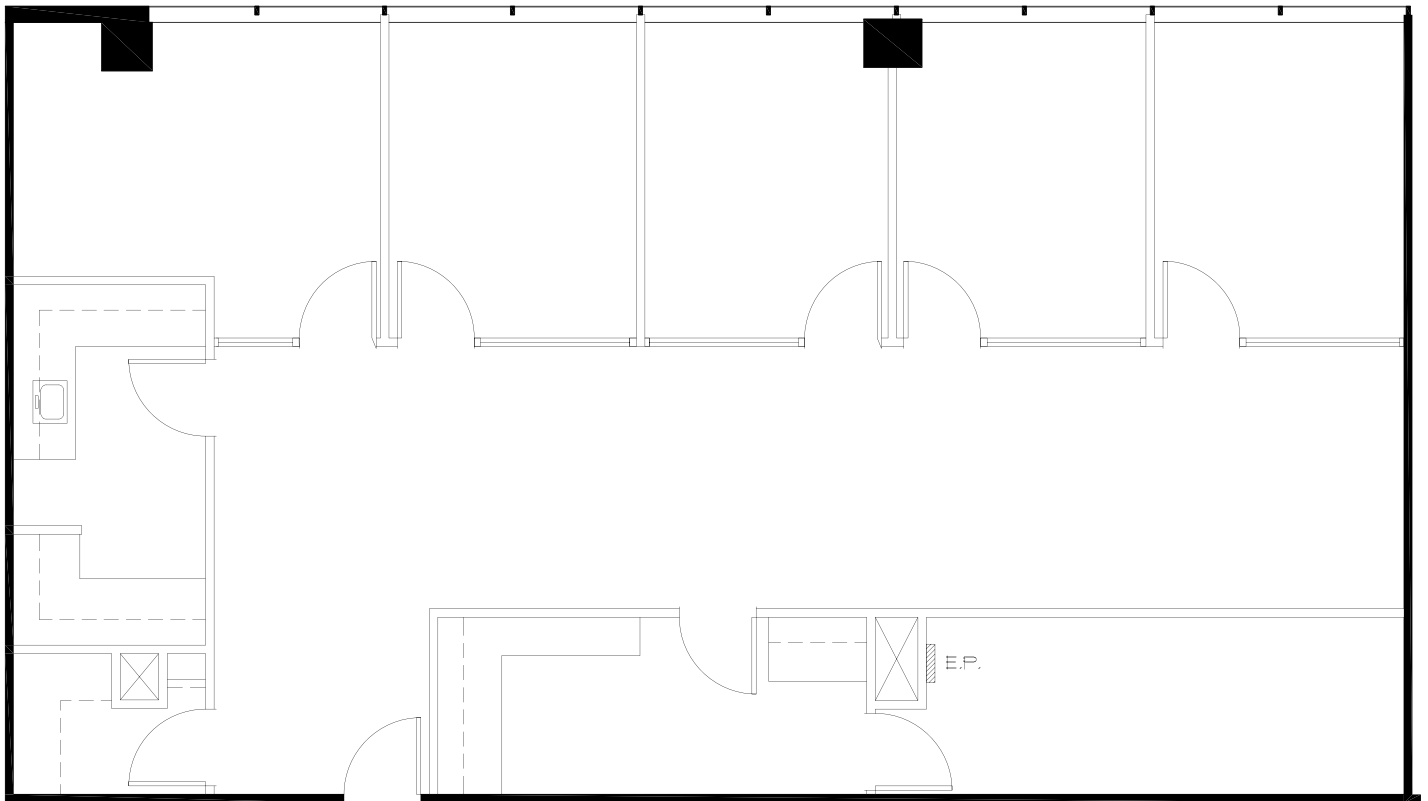
Senior Vice President
License ID# 01225873
949.790.3135
awicker@lee-associates.com

DAVE SMITH

Senior Vice President
License ID# 01195186
949.790.3134
dsmith@lee-associates.com

MATT FRYER

Vice President
License ID# 01333079
949.790.3122
mfryer@lee-associates.com



24022 CALLE DE LA PLATA • LAGUNA HILLS, CA

Please Contact Exclusive Agents:

ADAM WICKER

Senior Vice President
License ID# 01225873
949.790.3135
awicker@lee-associates.com

DAVE SMITH

Senior Vice President
License ID# 01195186
949.790.3134
dsmith@lee-associates.com

JASON DIROCCO

Associate
License ID# 01842301
949.790.3169
jdirocco@lee-associates.com



Lee & Associates - Irvine, Inc. | 111 Pacifica, Suite 310, Irvine, California 92618 | www.lee-associates.com

No warranty or representation is made to the accuracy of the foregoing information. Terms of sale or lease and availability are subject to change or withdrawal without notice.