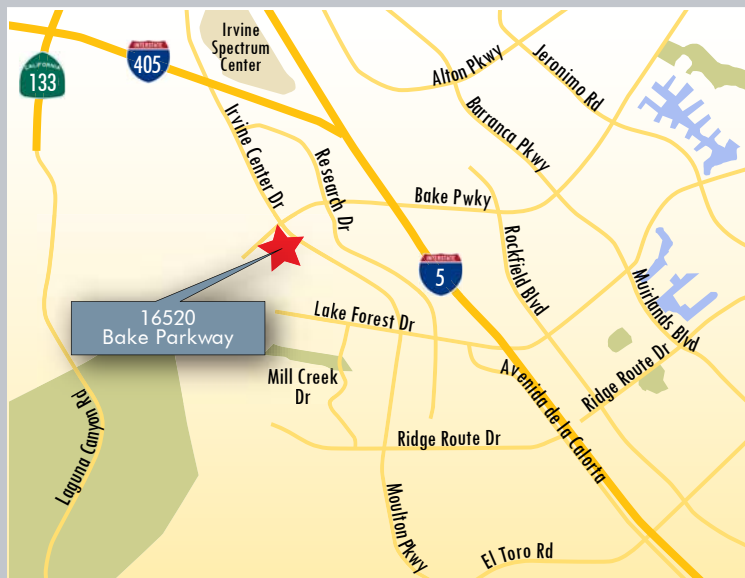


For more information, visit www.OCofficespace.com



16520 BAKE PARKWAY, SUITE 120 | IRVINE



Features:

- Suite 120: \$2.05 per square foot, Modified Gross
- Double-door entry, one (1) private office/conference room, kitchenette, server/storage room and open area
- Plug & Play: Furniture, phones and equipment available
- Generous surface parking
- Easy access to the I-5 and I-405 Freeways, and the 133 Toll Road

Please Contact Exclusive Agents:

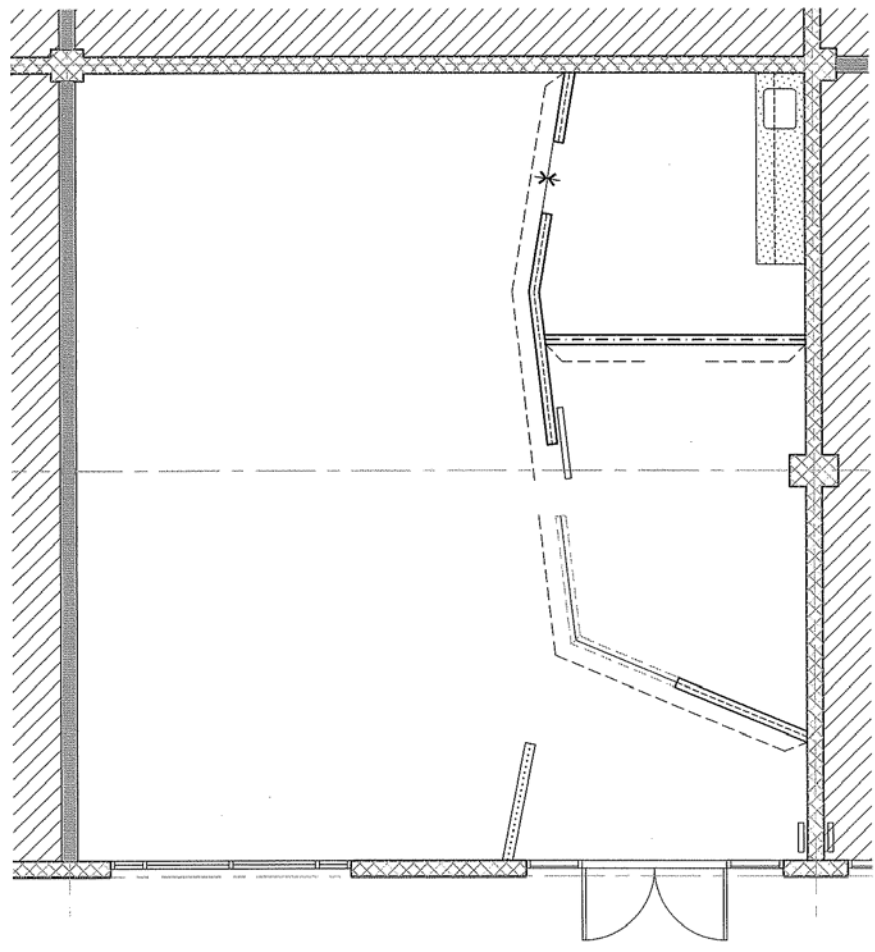
ROB RADER
Vice President
License ID# 01373045
949.790.3145
rrader@lee-associates.com

JASON DI ROCCO
Associate
License ID# 01842301
949.790.3169
jdirocco@lee-associates.com



Lee & Associates - Irvine, Inc. | 111 Pacifica, Suite 310, Irvine, California 92618 | www.lee-associates.com

No warranty or representation is made to the accuracy of the foregoing information. Terms of sale or lease and availability are subject to change or withdrawal without notice.



16520 BAKE PARKWAY • IRVINE, CA

Please Contact Exclusive Agents:

ROB RADER
Vice President
License ID# 01373045
949.790.3145
rrader@lee-associates.com

JASON DI ROCCO
Associate
License ID# 01842301
949.790.3169
jdirocco@lee-associates.com



Lee & Associates - Irvine, Inc. | 111 Pacifica, Suite 310, Irvine, California 92618 | www.lee-associates.com

No warranty or representation is made to the accuracy of the foregoing information. Terms of sale or lease and availability are subject to change or withdrawal without notice.